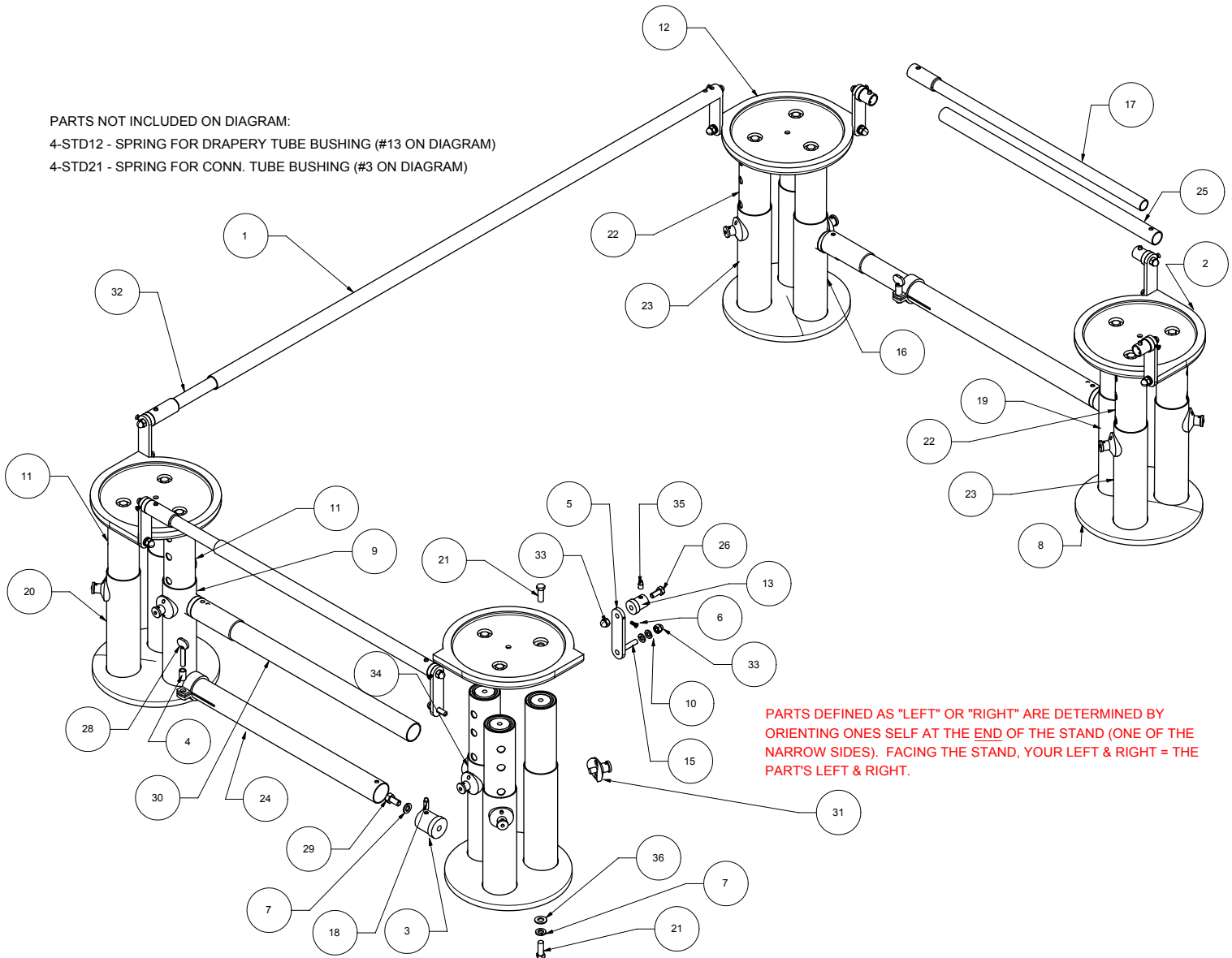


Lowering Device Stand Telescoping Model

FRIGID FLUID CO.



PARTS NOT INCLUDED ON DIAGRAM:
 4-STD12 - SPRING FOR DRAPERY TUBE BUSHING (#13 ON DIAGRAM)
 4-STD21 - SPRING FOR CONN. TUBE BUSHING (#3 ON DIAGRAM)



PARTS DEFINED AS "LEFT" OR "RIGHT" ARE DETERMINED BY ORIENTING ONES SELF AT THE END OF THE STAND (ONE OF THE NARROW SIDES). FACING THE STAND, YOUR LEFT & RIGHT = THE PART'S LEFT & RIGHT.



Lowering Device Stand Telescoping Model Parts

FRIGID FLUID CO.



Number	Part # - Nickel Stand	Part # - Stainless Stand	Description	Quantity
1	4-STD32	<-- same	OUTSIDE SIDE DRAPE TUBE	2
2	4-STD02L	<-- same	TOP FLANGE - LEFT	2
3	4-TSTD17	<-- same	CONNECTING TUBE BUSHING	4
4	4-STD26SLV	<-- same	SLEEVE FOR THUMB SCREW	2
5	4-STD06	<-- same	DRAPE TUBE FINGER	8
6	4-CTP03D	<-- same	SCREW FOR DRAPE HOOK	8
7	4-STD04A	<-- same	LOCK WASHER	16
8	4-STD01B	<-- same	BASE PLATE	4
9	4-TSTD08L	4-TSTD08LS	12 1/2" POST TUBE W/ LOCK & BUSHING - left	1
10	4-STD09	<-- same	LOCK WASHER	16
11	4-TSTD04	4-TSTD04S	12 1/2" INSIDE POST TUBE	6
12	4-STD02R	<-- same	TOP FLANGE - RIGHT	2
13	4-STD11	<-- same	DRAPE TUBE FINGER BUSHING	8
14	4-HTB87CR3/8-16 (outside)	<-- same	OUTSIDE POST TUBE COLLAR (not shown)	12
15	4-STD08	<-- same	THREADED STUD	8
16	4-TSTD10R	4-TSTD10RS	8" POST TUBE W/ LOCK & BUSHING - right	1
17	4-STD28	<-- same	INSIDE END DRAPE TUBE	2
18	4-STD22	<-- same	CONNECTING TUBE BUSHING BUTTON	4
19	4-TSTD11L	4-TSTD11LS	8" POST TUBE W/ LOCK & BUSHING - left	1
20	4-TSTD06	4-TSTD06S	12 1/2" POST TUBE W/ LOCK	4
21	4-TSTD12	<-- same	HEX BOLT FOR POST TUBES	24
22	4-TSTD05	4-TSTD05S	8" INSIDE POST TUBE	6
23	4-TSTD09	4-TSTD09S	8" POST TUBE W/ LOCK	4
24	4-STD25	<-- same	OUTSIDE CONN. TUBE W/ THUMB SCREW	2
25	4-STD29	<-- same	OUTSIDE END DRAPE TUBE	2
26	4-STD14	<-- same	HEX BOLT FOR FINGER BUSHING	8
27	4-HTB87CR3/8-16 (inside)	<-- same	INSIDE POST TUBE COLLAR	12
28	4-STD26	<-- same	THUMB SCREW	2
29	4-TSTD18	<-- same	HEX BOLT FOR CONN. TUBE BUSHING	4
30	4-STD24	<-- same	INSIDE CONNECTING TUBE	2
31	4-HTB88	<-- same	TUBING LOCK COMPLETE	12
32	4-STD31	<-- same	INSIDE SIDE DRAPE TUBE	2
33	4-STD15	<-- same	ACORN NUT	16
34	4-TSTD07R	4-TSTD07RS	12 1/2" POST W/ LOCK & BUSHING (right)	1
35	4-STD13	<-- same	FINGER BUSHING BUTTON	8
36	4-STD04W	<-- same	FLAT WASHER	12

